



# Field Pro® 6040

INFIELD GROOMER

## F E A T U R E S

**Consistent Results** – The rugged chassis, commercial-grade components, and wide range of attachments produce major league playing surfaces for your home field.

**More Efficient** – Four tools can be carried at once, dramatically reducing time spent preparing infields while allowing the operator to scarify, grade and drag smooth in a single pass.

**Increased Versatility** – Dozens of Toro Sand Pro®, Bullseye™ and third-party attachments easily make the Field Pro 6040 the go-to, start-to-finish ball field maintenance machine.

Attachment options include: laser level system, drag mats, grooming brooms, tooth rakes and much more.

## A Grade Above. From the Leader in Infield Maintenance.

Create ballfields that fans and players love with the Toro Field Pro 6040. This workhorse features efficient operation with the innovative MultiTool™, ergonomic operator comfort, and incredible versatility in attachment options. The dedicated platform produces a consistent, superior infield playing surface regardless of starting conditions. Precision engineering means precise results. With the Field Pro 6040, it's game on.

NEW



Call your Toro distributor at 800-803-8676

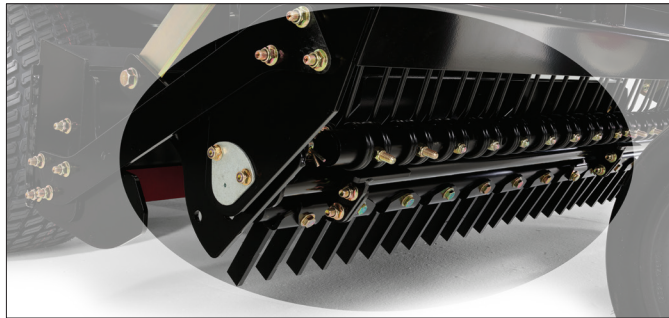


# Field Pro® 6040 Specifications\*



## MultiTool™

The Field Pro MultiTool is an innovative design that includes an integrated grader and an adjustable tool carrier to quickly and accurately grade, groom and perfect your infields. When fitted with the optional laser grading system the Field Pro 6040 will easily grade your infield for optimal game playing conditions.



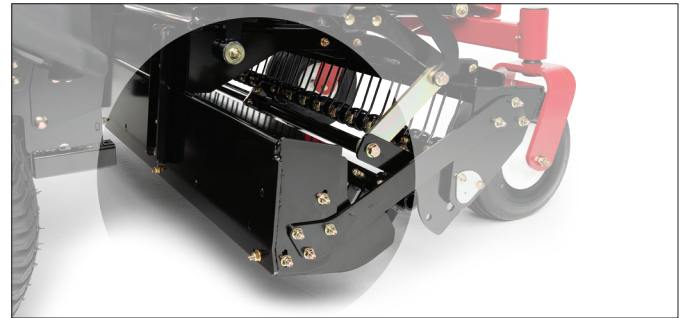
## MultiTool Adjustable Carrier

The MultiTool Adjustable Carrier allows for coarse or fine scarifying, allowing operator adjustments from field to field depending on conditions. Hydraulically-controlled depth and angle adjustment provide precise interaction, where needed, for desired results.



## QAS Rear Quick Attach System™

With the rear QAS, anyone can switch from one attachment to another in less than a minute, with no tools required. Match the machine to the environment to get your fields back into playing condition. QAS allows you to do more with less, and get the job done faster.



## MultiTool Box Grader

The integrated MultiTool box grader is nearly 6 feet (182 cm) wide for efficient and accurate grooming. Made from high-strength steel, the grader is built to last for years of dependable service. When fitted with the accessory tool holder, the grader is able to incorporate several additional tools including an Edger, Root Cutter, and Planer Blade Kit. Includes an abrasion resistant changeable wear edge.

## Rear QAS and MultiTool Attachments Available.

FIELD PRO 6040, MODEL 08839	
<b>ENGINE</b>	Kohler® Command PRO® 4-cycle OHV commercial gas engine. 25hp (18.6 kW) at 3600 RPM (SAE J1940). 44.0 cu. in. (725 cc). Oil Capacity: 2.0 quarts (1.9 liter).
<b>AIR CLEANER SYSTEM</b>	Premium air filtration system.
<b>FUEL CAPACITY</b>	8.0 gallon (36.3 liter) unleaded gasoline.
<b>TRACTION DRIVE</b>	Independent commercial grade high-torque wheel motors.
<b>GROUND SPEED</b>	Infinitely variable 0-10 mph (0-16 km/h) forward; 0-5.0 mph (0-8.0 km/h) reverse.
<b>HYDRAULIC OIL</b>	7.5 gallon (28.4 liter) system capacity. Polyethylene reservoir to reduce corrosion. 5 (nominal) micron replaceable cartridge.
<b>MULTITOOL</b>	Model 08854, sold separately – mid-mounted MultiTool includes an integrated 68" (172 cm) box grader and adjustable carrier with spring tines and solid carbide tines.
<b>TIRES/WHEELS</b>	<b>Rear:</b> 24 x12.00-12, <b>Front:</b> 15 x 6.00-6 commercial caster wheels.
<b>CONTROLS/GAUGES</b>	Hand operated choke, throttle, and hydraulic controls for raising/lowering and actuating the MultiTool Adjustable Carrier. Rear hydraulic lift and lower controls. Gauges: fuel, hour meter.
<b>DIMENSIONS</b>	<b>Width:</b> 67.8" (172 cm), <b>Length:</b> 103.8" (264 cm), <b>Height:</b> 50.7" (134 cm), <b>Wheelbase:</b> 59.6" (151 cm)
<b>GROUND CLEARANCE</b>	7.3" (18.4 cm)
<b>WEIGHT</b>	Net weight (less fluids): 1,620 lbs. (735 kg) with MultiTool installed.
<b>WARRANTY</b>	Two-year limited warranty. Refer to the Operator's Manual for further details.

\*Specifications and design subject to change without notice. Products depicted in this literature are for demonstration purposes only. Actual products offered for sale may vary in use, design, required attachments and safety features. See distributor for details on all warranties.

